



BROCHURE

CITECT SCADA

Operator Empowerment and Engineering Efficiency for a new era

Citect SCADA is our leading high-performance Supervisory Control and Data Acquisition (SCADA) software solution for industrial process customers. Superior operational context and in-built functionalities help consolidate, simplify and streamline control; empowering operators to optimise the now while designing and realising a future they imagined.



AVEVA™

Overview

Citect SCADA is a key pillar of our monitoring and control industrial software suite. Building on our renowned foundation of engineering performance, flexibility and simplicity; The latest release of Citect SCADA introduces a streamlined configuration experience that helps modernise operations with a heightened focus on operator empowerment and engineering efficiency.

Key Benefits:

- Engineering Cost Reductions with a host of contextual improvements that simplify project design and management
- Enhanced Operator Awareness with navigation zone and alarm indicators saving valuable time in diagnosing process anomalies
- Increased Production Efficiency with new contextual workspace that simplifies the operator experience and facilitates timely decision making and reduces risk of downtime
- Extended operational value with native integration to our AVEVA Industrial Software portfolio
- Mobile extension capabilities with Citect Anywhere via HTML5-compliant web browsers
- Alignment with Abnormal Situation Management industry best practice guidelines

What's New

The latest release of Citect SCADA introduces a host of features that empowers operators to harness an increasing array of data sets, with richer operational context and enhanced configuration capabilities making them more efficient than ever before.

Latest functionalities include:

Context-Aware Workspace

- In-built context system that updates faceplates and information zone for selected equipment
- Workspace templates for 1080p and 4K screen resolutions
- Menu driven navigation, with auto-generated navigation menu with alarm counts
- Multi-monitor support enabling you link multiple screens together

Comprehensive Equipment Library

- Wide selection of symbols that follow industry best practises for Situational Awareness / Abnormal Situation Management
- Configurable and available out-of-the-box

Alarm Management Enhancements

- Shelf alarms and add information about the cause of alarm pauses, as well as auto/manual capabilities to un-shelve and re-shelve support
- Define causes of alarms and include a response for every alarm, including "time to respond" and consequences for inaction.
- Native Alarm Indicators, showing alarm borders and flags for equipment in alarms



Context-aware Workspace



Library of Configurable Objects



Alarm Management Enhancements

Key Features

Context-Aware Workspace

- A dedicated out-of-the-box Situational Awareness Workspace that provides flexible, consistent, rich context for operators, as well as a new way to build context-aware SCADA visualisation.
- Equipment-driven interface provides operators with real-time, holistic situational context to help improve efficiency and facilitate timely corrective action.
- Seamlessly integrated Alarming, Trending, Interlocks and Control data together in a single interface, across multiple monitors without the need for coding.
- All helping to minimise visual distractions for operators, enabling timely decision making and helping to mitigate risk and operational downtime.

Comprehensive Equipment Library

- A wide selection of configurable symbols that follow industry best practice for Situational Awareness including:
 - Drives
 - Valves
 - Meters
 - Data and UI Elements
 - Mining Objects
 - Polar Star
 - Bar Graph
 - Wind Compass

- Out-of-the-box symbol library significantly reduces time building graphics while giving the flexibility to customise objects to suit your unique needs.
- Improvements in graphics system and new workspace concept substantially reduces time building complex layouts.
- Pinned windows, named animations, animated polyline vertices to help simplify the engineering experience.

Enhanced Alarm Management

- In-built navigation zone within Workspace providing a instant visual alarm summary, with immediate focus to abnormal situations, showing the highest priority alarm for a piece of equipment.
- Alarm indicators to quickly draw operators attention and help locate the source of anomalies and associated severity.
- Alarm Shelving allowing you to temporarily silence alarms for a specific duration or until a specified time, with the ability to re-shelve as needed.
- Define up to 8 Cause(s), Response(s), and Consequence(s) for your alarms to give your operators the information they need to deal with abnormal situations.



Context-aware Workspace

Seamless integration

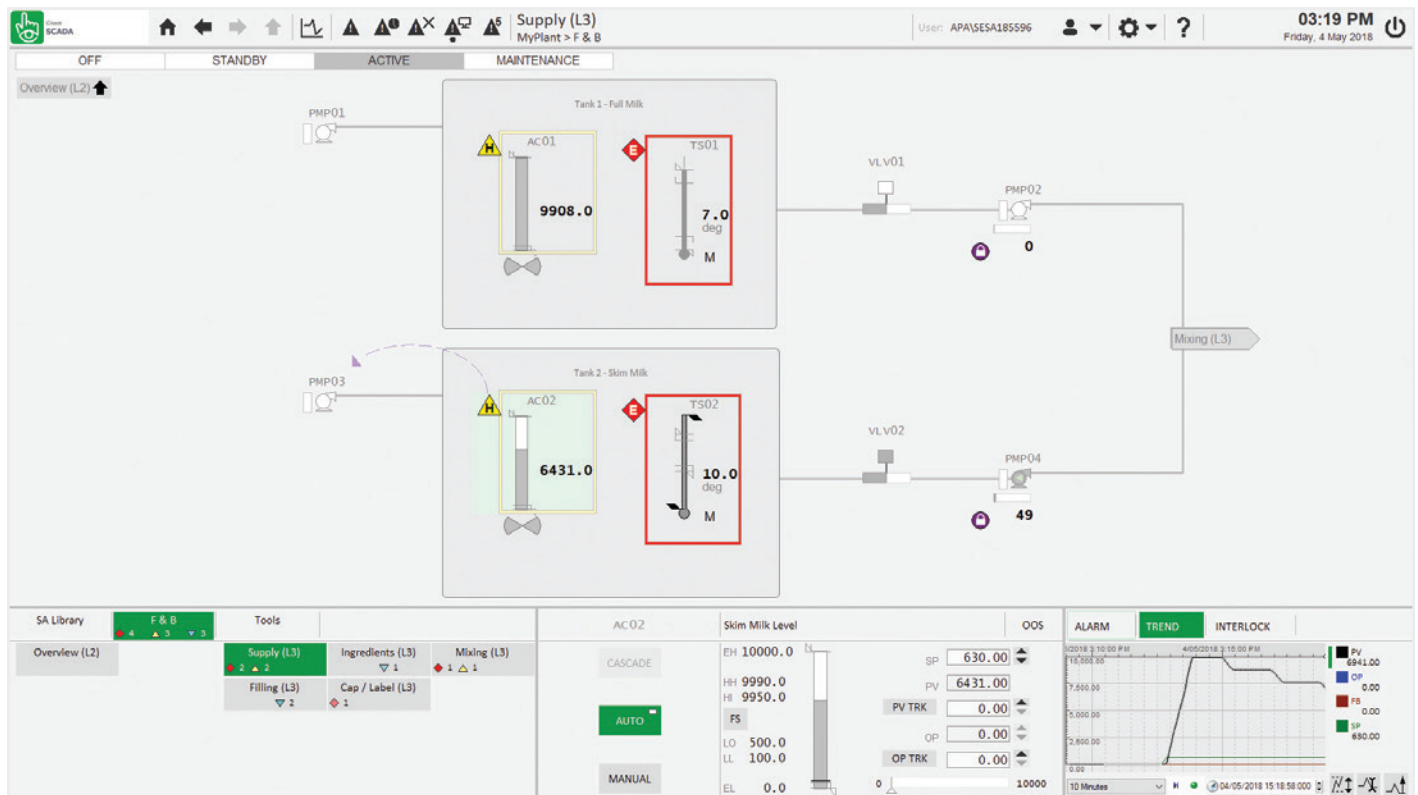
The latest release of Citect SCADA offers native connectivity with our industrial software suite and tight application integration with third-party hardware and software offerings, helping to unlock and extend the value of our customers' SCADA systems.

Mobile Access

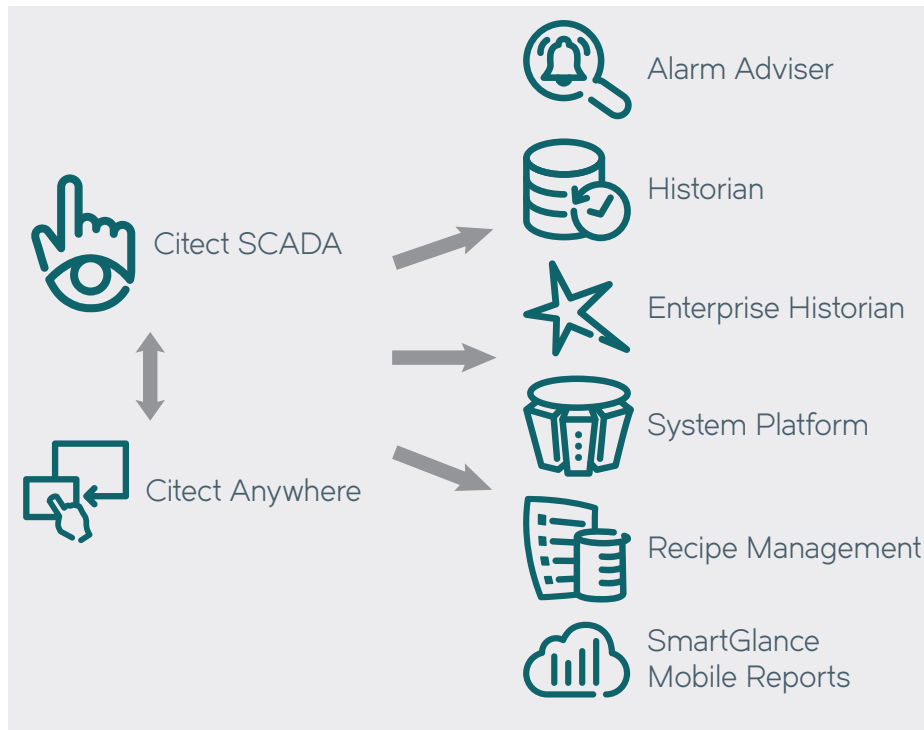
Citect Anywhere is a mobile extension of Citect SCADA that provides unprecedented real-time access to Citect applications via HTML5-compliant web browsers. Citect Anywhere enables visualisation, collaboration and execution at various levels of the organisation with zero client installation and maintenance, enabling users to securely troubleshoot plant equipment from any location, on any device, at any time.

Summary

- Seamlessly weave Visualisation, Alarms, Trends, Interlocks and Control together for superior operational context
- Build an effective SCADA system out-of-the-box faster than ever before.
- Comprehensive Library and Operational Content out-of-the-box
- Increase Operator effectiveness in all situations.
- Any Citect SCADA system can embrace the new Features



Context-aware Workspace



The latest release of Citect SCADA introduces an intuitive, streamlined SCADA solution that delivers an advanced level of engineering capability and operational context to build effective Situational Awareness-enabled SCADA solutions.

As a result, our customers can take back control of their operations with the bandwidth to focus on driving efficiency gains and accelerating their digital transformation journeys.

With a suite of offers and combined capabilities that are unmatched in the industry, our seamless connectivity to our leading Industrial Software portfolio, drives further operational value for customers with a more holistic view of operational data.

About AVEVA

AVEVA is a global leader in engineering and industrial software driving digital transformation across the entire asset and operational life cycle of capital-intensive industries. The company's engineering, planning and operations, asset performance, and monitoring and control solutions deliver proven results to over 16,000 customers across the globe. Its customers are supported by the largest industrial software ecosystem, including 4,200 partners and 5,700 certified developers. AVEVA is headquartered in Cambridge, UK, with over 4,400 employees at 80 locations in over 40 countries.

AVEVA believes the information in this publication is correct as of its publication date. As part of continued product development, such information is subject to change without prior notice and is related to the current software release. AVEVA is not responsible for any inadvertent errors. All product names mentioned are the trademarks of their respective holders. © 2018 AVEVA Solutions Limited and its subsidiaries. All rights reserved.