

SOLUTION DATASHEET

Enterprise Crude Knowledge Management

Manage, Use, And Share Crude Experience

With changing operations, changing crude qualities and changing prices, making sure all users have access to correct and approved information is difficult. Spiral Unified Supply Chain Management is the first system to enable the concept of Enterprise Crude Knowledge Management by introducing core workflows that allows organizations to easily maintain, improve, and distribute their crude oil experience across broad users groups.

Key Benefits

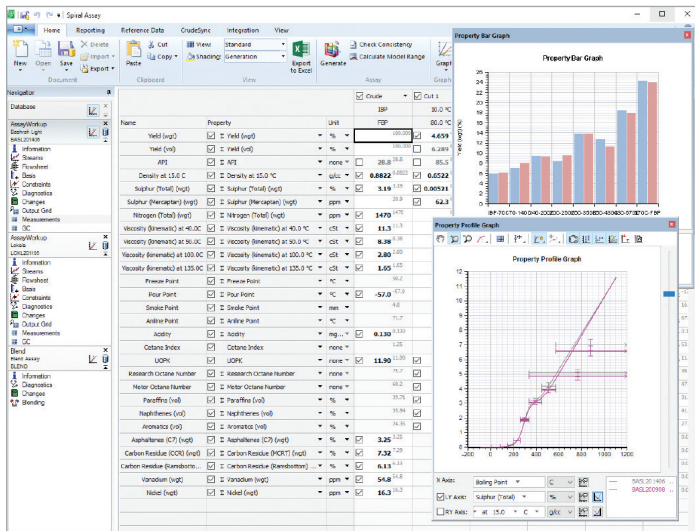
- Accessible via web and desktop interfaces; users access the tools they need in the way they want
- Promotes collaboration via shared data and views; diverse teams understand and contribute to each others' problems
- Includes cargo tracking functionality to monitor crude quality and highlight potential issues; prevent processing problems and determine when crude quality shifts become significant; combine cargo data with AssayUpdate to deliver accurate quality information for use in planning and scheduling decisions
- Crude Approval workflows let different user groups easily understand processing challenges and allows easy targeting of operations; combine with advanced blending for easy exploration of blends, for better scheduling and understanding of processing behaviour
- Quickly calculate economics via Netback, allowing access to crude rankings and margins in regional markets and at specific plants, with integration to in-house or Platts pricing, for current and historical analysis
- Highlight issues with alerts and forums, letting users learn from previous experience, and warning them on potential problems
- Share information via CrudeSync across users and sites to propagate new information and ensure consistent decision making
- Guaranteed consistent crude oil data for planning, scheduling and trading; combine processing experience with planning and scheduling to understand economics alongside operational feasibility



Build Confidence with Shared Understanding

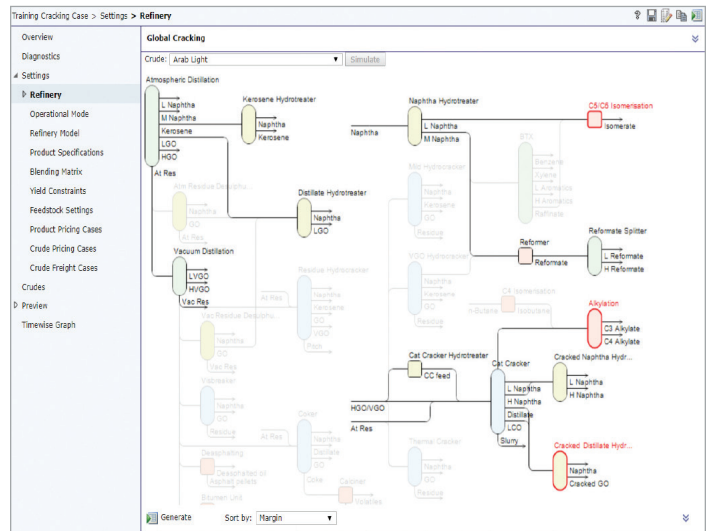
Individuals are encouraged to contribute to the business' knowledge through online (internal) forums. An intelligent alerting system makes sure users are informed about relevant changes, helping your plants operate safely and profitably. Cargo tracking is used to trace crude and its relative processing behaviour through operations, while sharing relevant information between teams and users.

Spiral Unified Supply Chain Management's flexible user interface allows individuals to adapt their workflows to meet requirements, with role-based permissions giving confidence and traceability. Users can more confidently work with new or challenging feedstocks, helping the business adapt to changing requirements.



Combine Economics and Processing Experience

Determine profitability quickly with full understanding of value. Netback provides regional and site-specific refinery models to give fast crude rankings, with integration to Platts or in-house pricing data, allowing generation of current or historical margins in a rapidly changing market. BlendExplorer and BlendSearch allow analysis of blend opportunities and blend windows, helping target blend recipes for more stable operations and increased profitability. Combined with Spiral Unified Supply Chain Management's powerful statistical modeling capabilities, Crude Approval workflows compare changing crude quality against operational capability, simplifying trading and scheduling workflows, with easy insight and understanding of potential problems.



Spiral Unified Supply Chain Management

Build and share knowledge and experience with Spiral Unified Supply Chain Management's single platform enabling visibility and optimization of the entire supply distribution process. Simple, fast and secure, each stakeholder works side-by-side, with shared understanding and shared confidence in robust and realizable decisions and strategies.

For more information on AVEVA's Spiral Unified Supply Chain Management, please visit sw.aveva.com/plan-and-schedule

