

INDUSTRY SOLUTION



# AQUIS WATER NETWORK MANAGEMENT LEAK DETECTION SYSTEM FOR WATER TRANSMISSION NETWORKS

---

For Leak Detection and Location

---



## Characteristics and Benefits

- Near real-time identification of leaks and bursts on transmission networks
- Pre-location of leaks
- Automatic notification to the SCADA system
- Easy to integrate and configure
- Reduced water loss and system vulnerability

Based on more than forty man-years of experience with hydraulic models and leak detection and location on transmission systems, the Aquis Water Network Management Leak Detection System (LDS) has been designed with the ultimate model-based engine for water pipelines.

LDS allows near real-time identification of leaks and bursts on transmission networks and the estimation of the leak volume based on the mass balance methodology.

Then, the pre-location of the leak is carried out based on the pressure gradient method that allows a high grade of accuracy on the location depending on the characteristics of the instrumentation and network. For that reason, the installation of high accuracy devices is strongly recommended (at least 0.1% for pressure meters and 0.5% for flow meters).

LDS runs a dynamic real-time simulation model to generate leak responses. This means that the LDS is able work under all operating conditions, including periods with starting and stopping of pumps, opening and closing of valves, etc. The outcome of this dynamic system is the detection and location of the leaks.

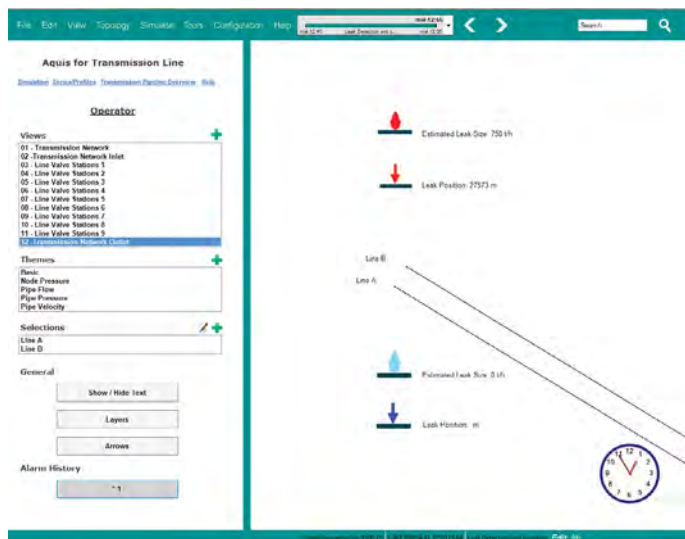
## Leakage Management Technology

Aquis Water Network Management LDS possesses an easy to configure set of data services that enables a seamlessly access to most modern SCADA systems.

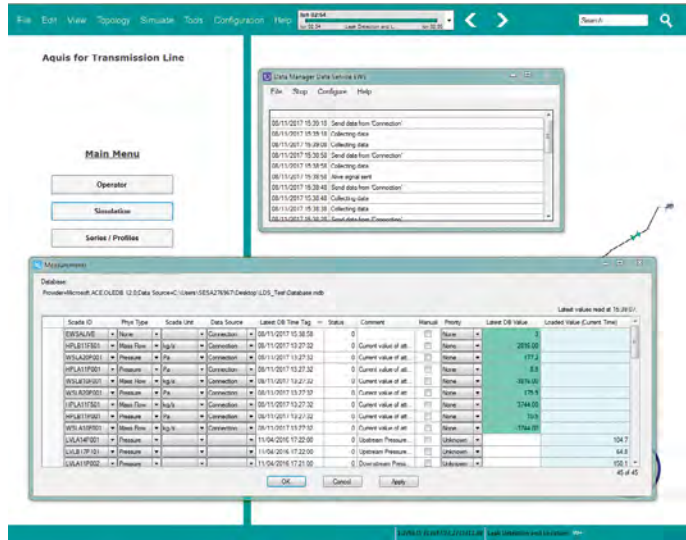
This integration ensures a robust leak detection system that uses all currently available information and is always in operation. The Aquis Water Network Management LDS provides several customizable options for checking incoming measurements and emulating missing or faulty data.

Furthermore, users have access to a straightforward configuration of the system that allows a clear presentation of results via the comprehensive graphical user interface.

Leak alarms are stored in the LDS event log and may be transferred to the SCADA system by means of the LDS-SCADA intercommunication.



User-friendly human machine interface allows clear presentation of the results



Easy to configure data services enable access to most SCADA systems

## Further Information

For more information on Aqis Water Network Management Leak Detection System for Water Transmission Networks please visit

[www.aveva.com](http://www.aveva.com)

AVEVA Worldwide Offices | [www.aveva.com/offices](http://www.aveva.com/offices)

AVEVA believes the information in this publication is correct as of its publication date. As part of continued product development, such information is subject to change without prior notice and is related to the current software release. AVEVA is not responsible for any inadvertent errors. All product names mentioned are the trademarks of their respective holders.

Copyright © 2018 AVEVA Group plc and its subsidiaries. All rights reserved. AENG/DS/18.



@avevagrroup



[linkedin.com/company/aveva](https://www.linkedin.com/company/aveva)

[aveva.com](http://aveva.com)