



Custom Widgets Tutorial InTouch Machine Edition (ITME)

by Fabio Terezinho

Confidential Property of Schneider Electric



Life Is On

Schneider
Electric

Agenda

- Overview
- Demonstration

A man in a dark suit and tie is standing in front of a whiteboard. He is holding a black marker and has just finished writing the word 'Agenda' in a white, cursive font. The background is a plain, light-colored wall.

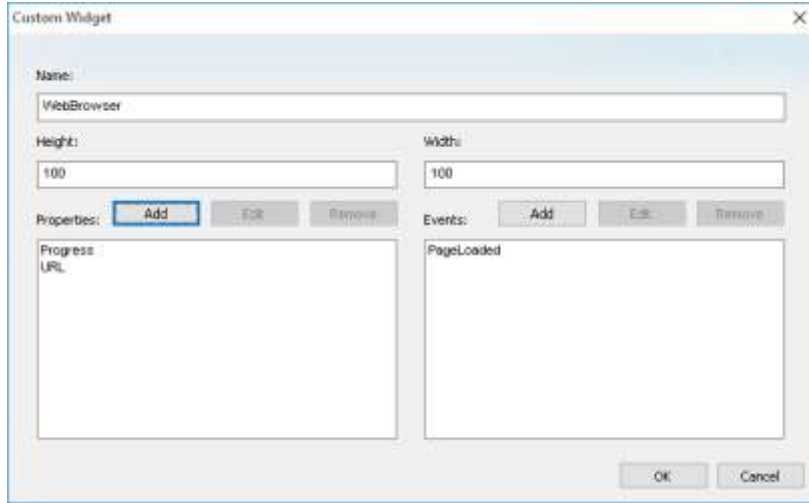
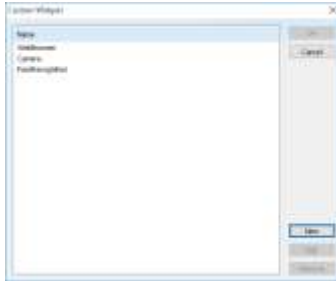
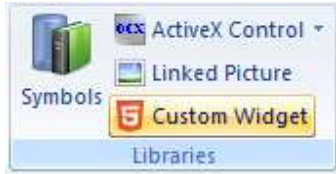
Agenda

- 1 _____
- 2 _____
- 3 _____
- 4 _____
- 5 _____
- 6 _____

Overview

Main Benefits and Architecture

Openness and Flexibility



Benefits

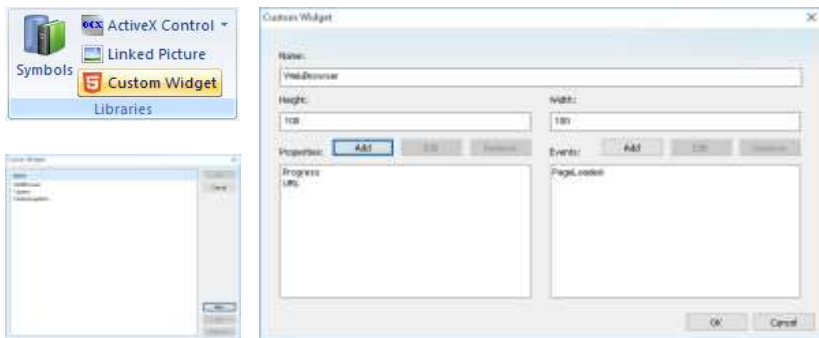
- Ability to integrate third-party web-based controls into the HMI/SCADA project screens.
- Engineers with HTML/JScript can easily create Custom Widgets and define Properties/Events through the IDE. Users can use the Custom Widgets on the local Viewer and Thin Clients.
- Ability to create an ecosystem where different users build and share library of controls that can be easily integrated into applications and accessible through multiple platforms.

Design and Integration

Custom Widgets can be designed and integrated into application in two phases:

Phase 1: Create the Custom Widget and add it to the project library.

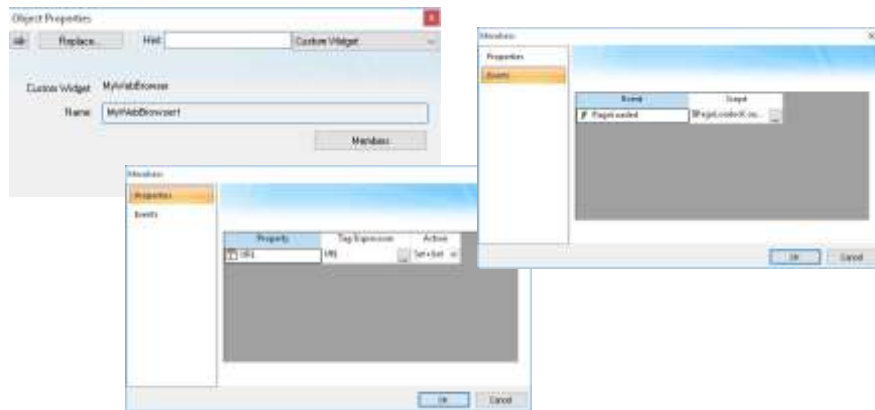
Design the Custom Widget name, properties, and events through the standard IDE



Implement the Custom Widget functionality, editing a HTML (index.html) and JScript (custom_widget.js) files.



Phase 2: Add instances of the Custom Widget into the project screens and link its properties and events to application tags and scripts.



Demonstration

Tutorial – show time!

A photograph of a woman with her hair in a bun, wearing a pink sweater, blowing a large white bubble. A young child with dark hair, wearing a dark blue shirt, is smiling and pointing towards the bubble. The scene is set indoors with a white brick wall and a green plant in the background. A green horizontal bar is overlaid on the image, containing the text.

Life Is On
THANK YOU

Life Is On

Schneider
Electric